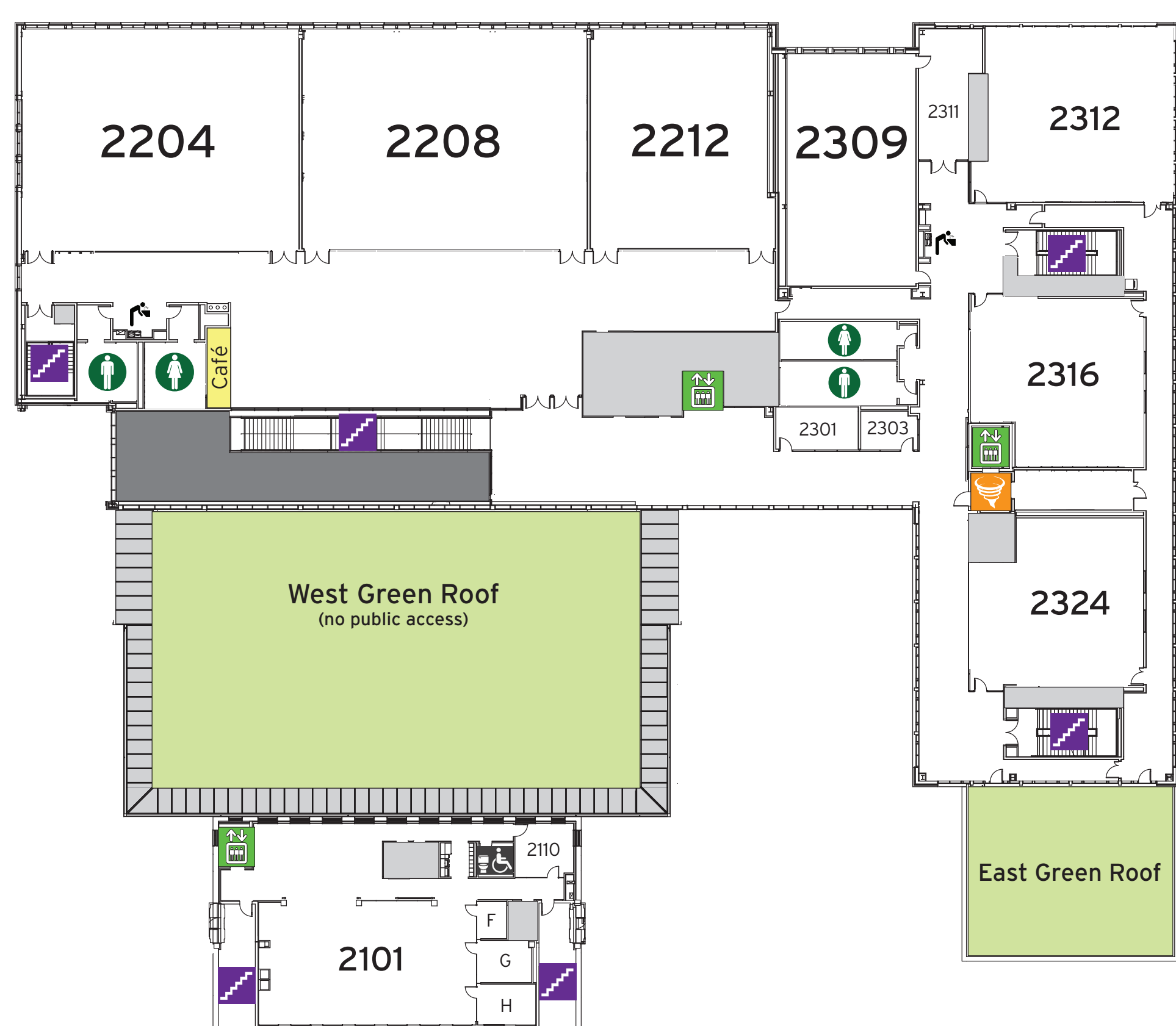


EVACUATION & SHELTER PLAN

SECOND FLOOR

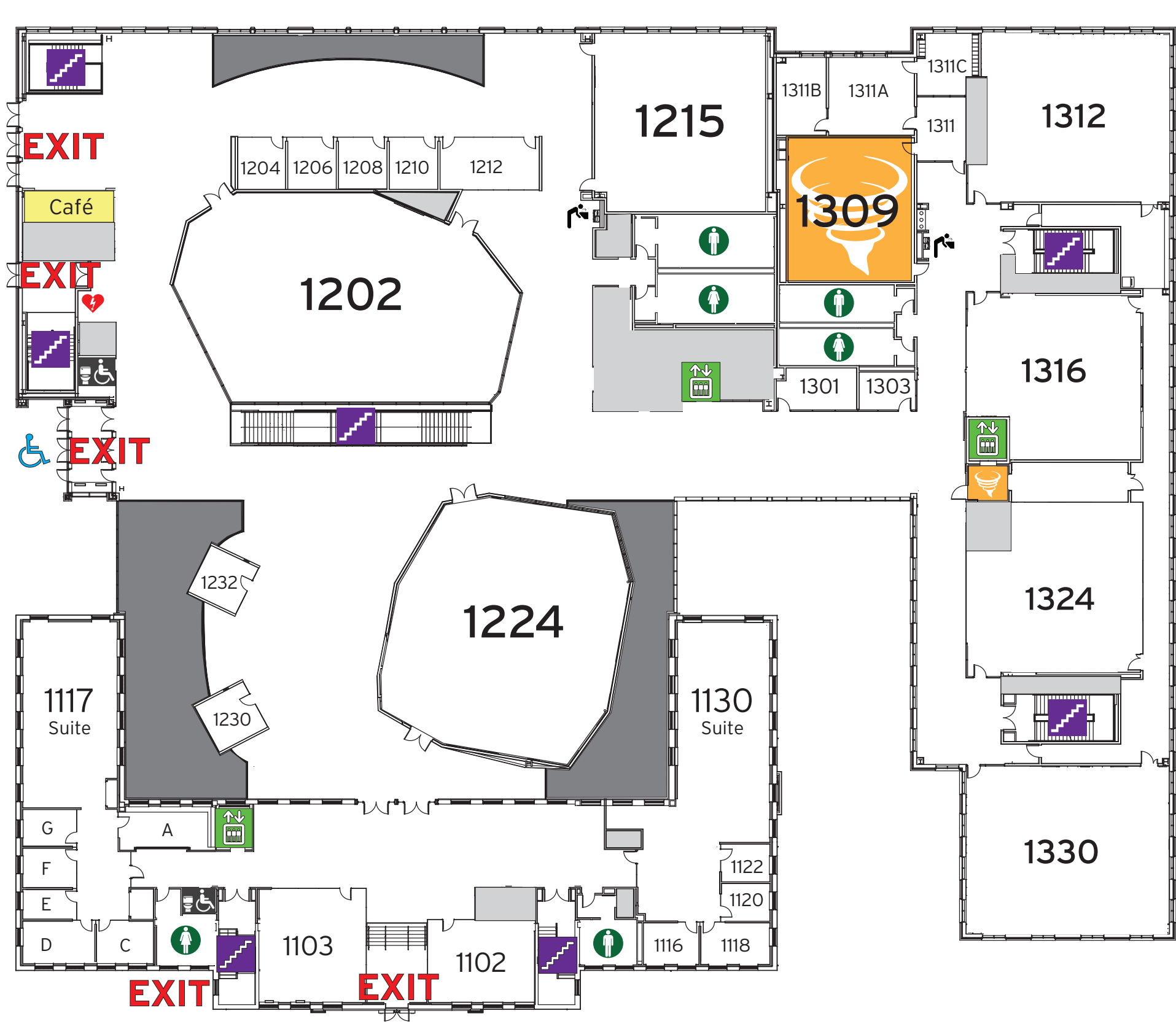
2100-2300



FIRST FLOOR

1100-1300

CAMPUS DRIVE



MCKELDIN MALL

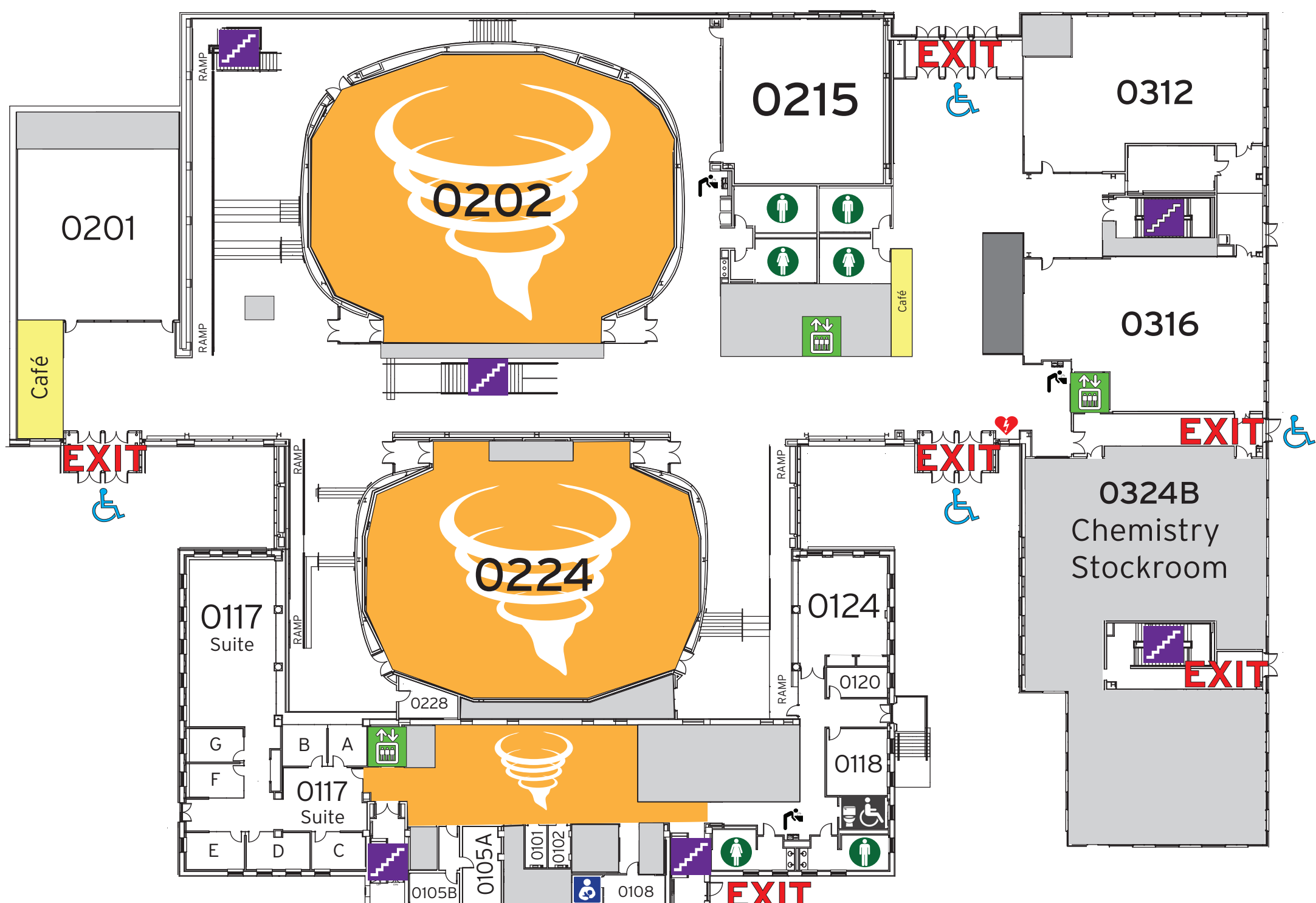


ASSEMBLY POINT

GROUND FLOOR

0100-0300

CAMPUS DRIVE



MCKELDIN MALL



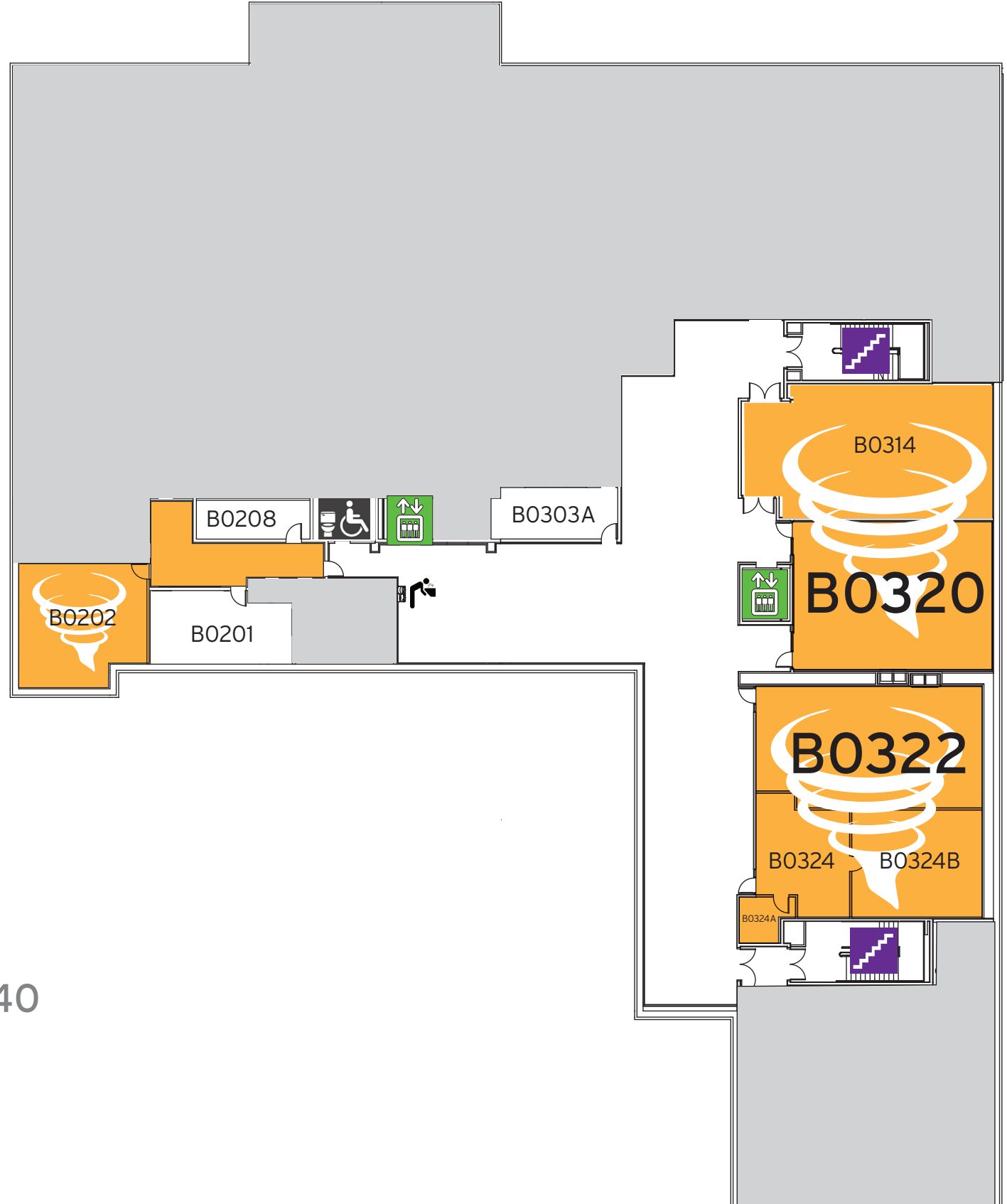
ASSEMBLY POINT

BASEMENT

B0200-B0300



4131 Campus Drive
College Park, MD 20740
Building 226



IN CASE OF EMERGENCY

DISABILITY ACCESS

If you are disabled (even temporarily), you should plan ahead for emergencies and be aware of your capabilities and limitations. For planning assistance, contact firemashal@umd.edu

SHELTER-IN-PLACE

The safest locations to seek shelter vary by hazard. In some situations, it may be best to stay where you are and avoid any uncertainty outside.

For weather-related incidents, seek a low level and interior space away from corners, windows, doors, and outside walls.

Check UMD Alerts to know when it is safe to leave and for other emergency notifications.

EARTHQUAKE

IF YOU ARE INDOORS - Drop to the ground. Take cover under a sturdy table or desk, or protect your head with your arms and hold on.

IF YOU ARE OUTDOORS - Stay outdoors in the open away from power lines or anything that might fall.

FIRE & EVACUATION

Pull fire alarm if it is not already sounding. Leave the building immediately using the nearest exit. Evacuate to the Assembly Point.

DO NOT USE ELEVATOR

FIRE - POLICE - RESCUE

911 or (301) 405-3333

KEY

- AED
- All Accessible
- Restroom
- Gender Neutral Restroom
- Elevator
- Laboratory
- Tornado Shelter
- Stairwell to Exit
- Lactation Room
- Water Fountain Bottle Fill Station
- TERP Classroom
- Huddle Room

ASSEMBLY POINT

